

MRA Digital, LLC

[www.mradigital.com](http://www.mradigital.com)

[info@mradigital.com](mailto:info@mradigital.com)

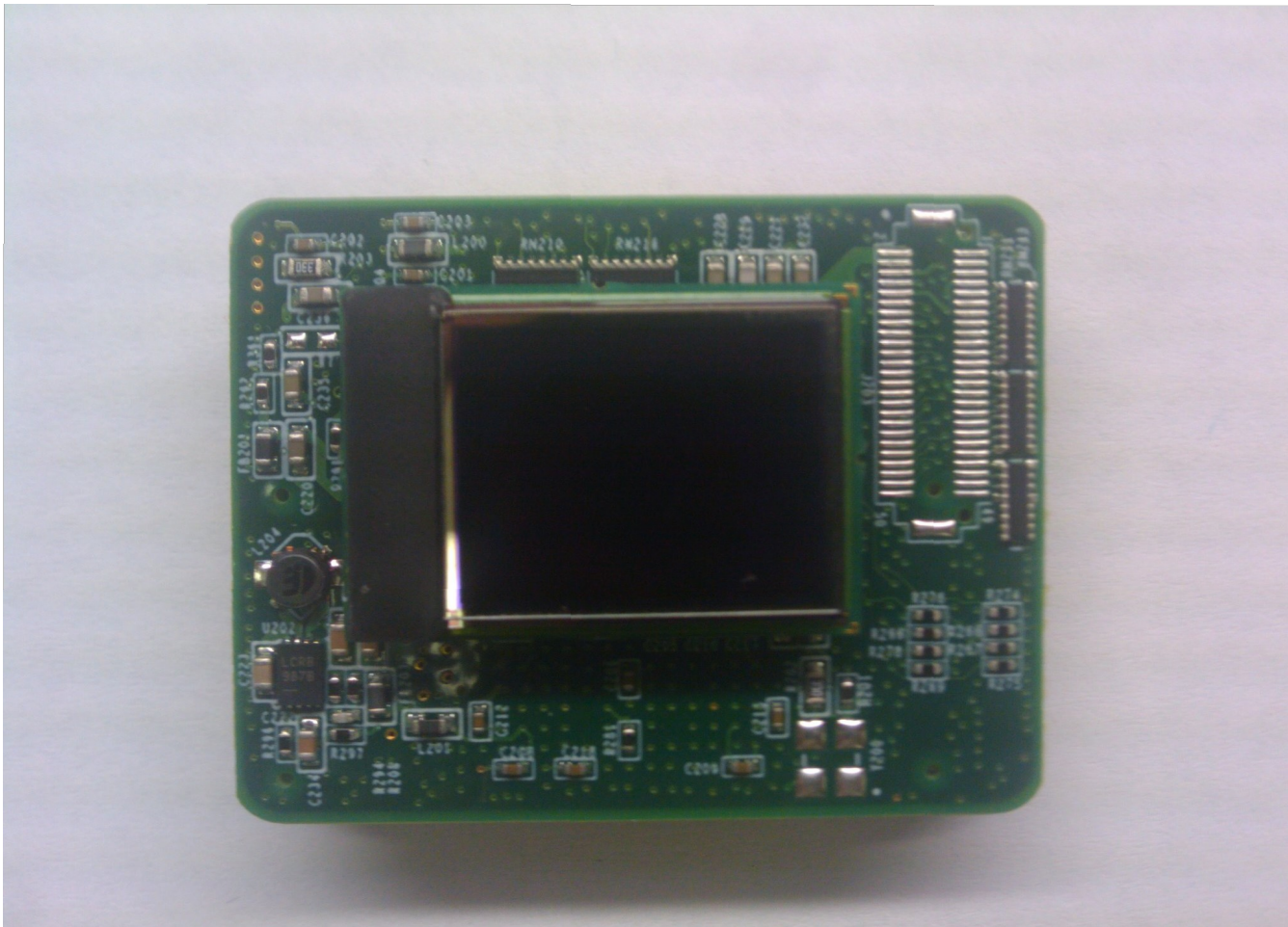
443-224-8955

SXGA 1012-SD V2 Driver Board  
Cable Connection Guide

# SXGA 1012-SD V2 Cable Connection Guide

## SXGA OLED Connection

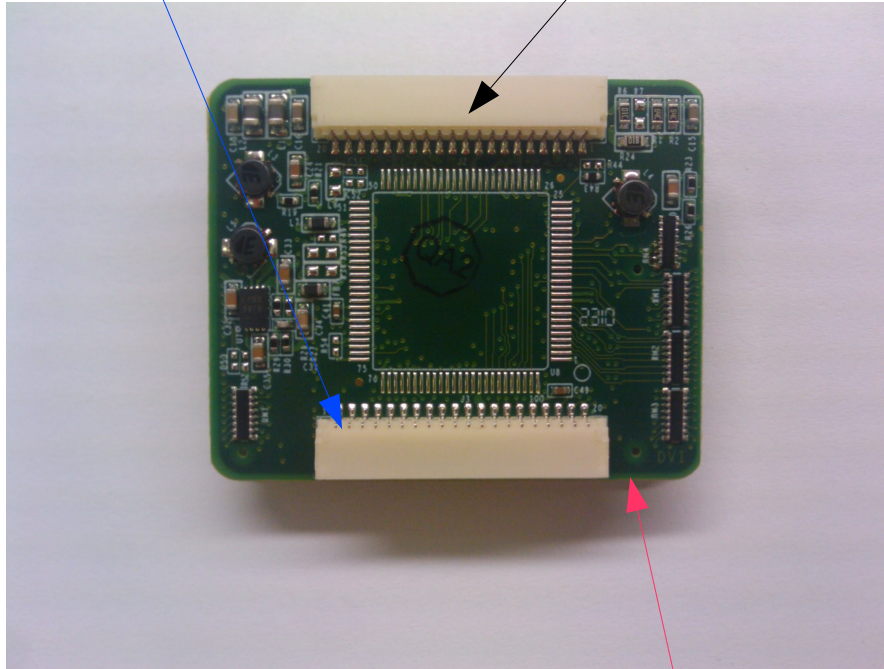
1. The OLED connector is NOT keyed and thus it should be connected to the Driver board as shown in the photo.



# SXGA 1012-SD V2 Cable Connection Guide

Connector USB Cable Here

Connector DVI Cable Here



Back

## DVI/HDMI and USB Cable Connections

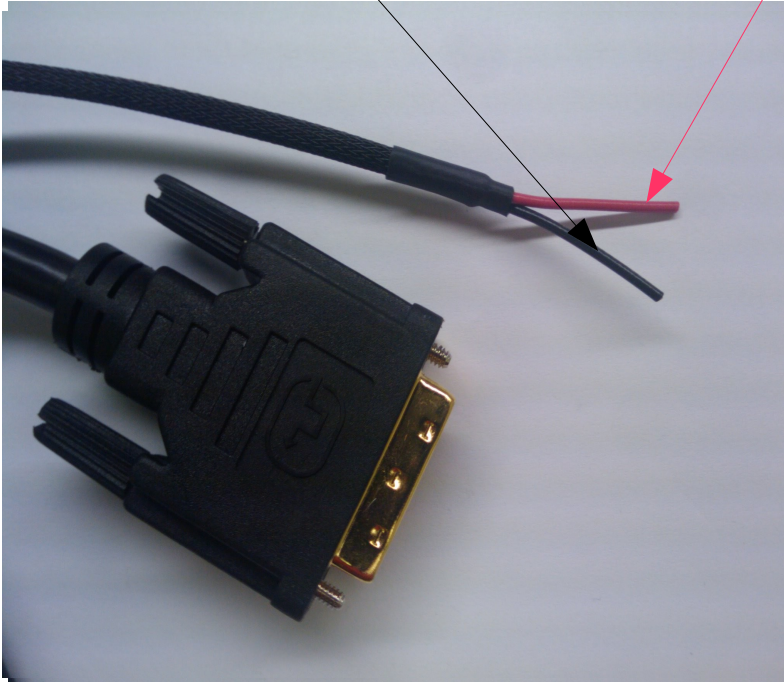
1. Plug the DVI or HDMI cable into your PC or your video source
2. The other end of the the DVI or HDMI cable should be connected as denoted in the photo.
3. Be sure download and install the USB driver for the configuration cable from our website.
4. The USB cable can be used with the eMagin configuration software.

**Note: The DVI marking is incorrect and should be ignored**

# SXGA 1012-SD V2 Cable Connection Guide

Ground Terminal

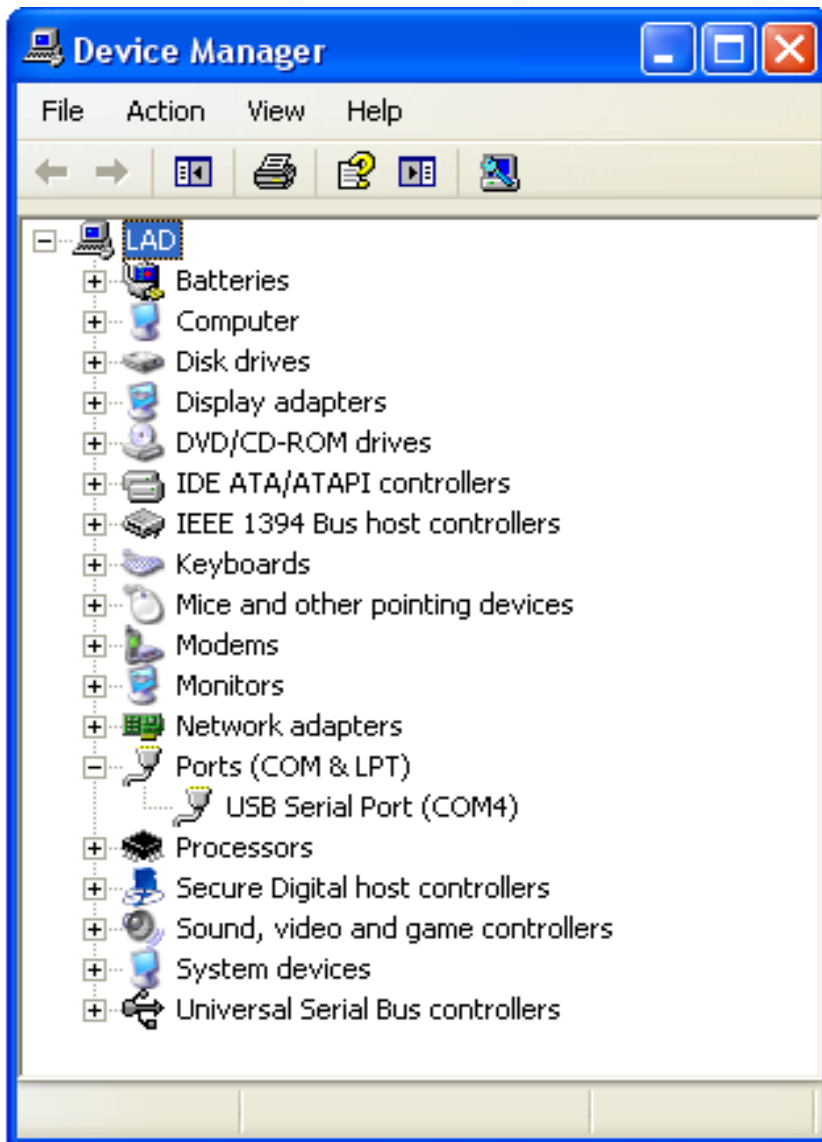
Positive Terminal (3.3V – 5.0V DC)



## Power Cable Connections

1. The SXGA 1012 Driver can be powered using +3.3V to +5.0 DC
2. The **Red Wire** MUST be connected to the Positive terminal of your battery or power source
3. The **Black Wire** MUST be connector to the Ground or Negative terminal of your battery or power source.
4. The USB cable can be used with the eMagin configuration software.

# SXGA 1012-SD V2 Cable Connection Guide



## Working With the USB Config Cable

1. Once the USB driver is installed, a virtual COM port will be installed on your PC. This configuration software uses the virtual COM port to communicate with the SXGA Driver board.

2. To find the virtual COM port number go to the Device Manager window and then expand the Port(COM &LPT) option. In the photo shown the virtual COM port number is 4. The COM port number will stay the same as long as you are using the same configuration cable.

3. The Virtual COM port number **MUST** be used when starting up the configuration software or upgrading the firmware within the Driver Board.

[Click Here to Download USB Driver](#)

# SXGA 1012-SD V2 Cable Connection Guide

## Power Up Sequence

1. There is no particular power up sequence, but a few examples are as follows:

### Ex1. **With PC on**

- a. Connect DVI cable to Video Source and to the Driver board
- b. The PC may make a noise which indicates that a new monitor has been connected
- c. This can be verified by going to the monitor properties window
- b. If needed connector USB cable to PC and to the Driver Board
- c. Turn on Power to the Driver Board
- d. An image will be displayed on the OLED

### Ex2. **With PC off**

- a. Connect DVI cable to Video Source and to the Driver board
- b. If needed connector USB cable to PC and to the Driver Board
- c. Turn on Power to the Driver Board
- d. Turn on Power to the PC
- e. The LED on the driver board will flash rapidly until a valid video signal is received.
- f. Log into your PC
- g. An image will be displayed on the OLED