

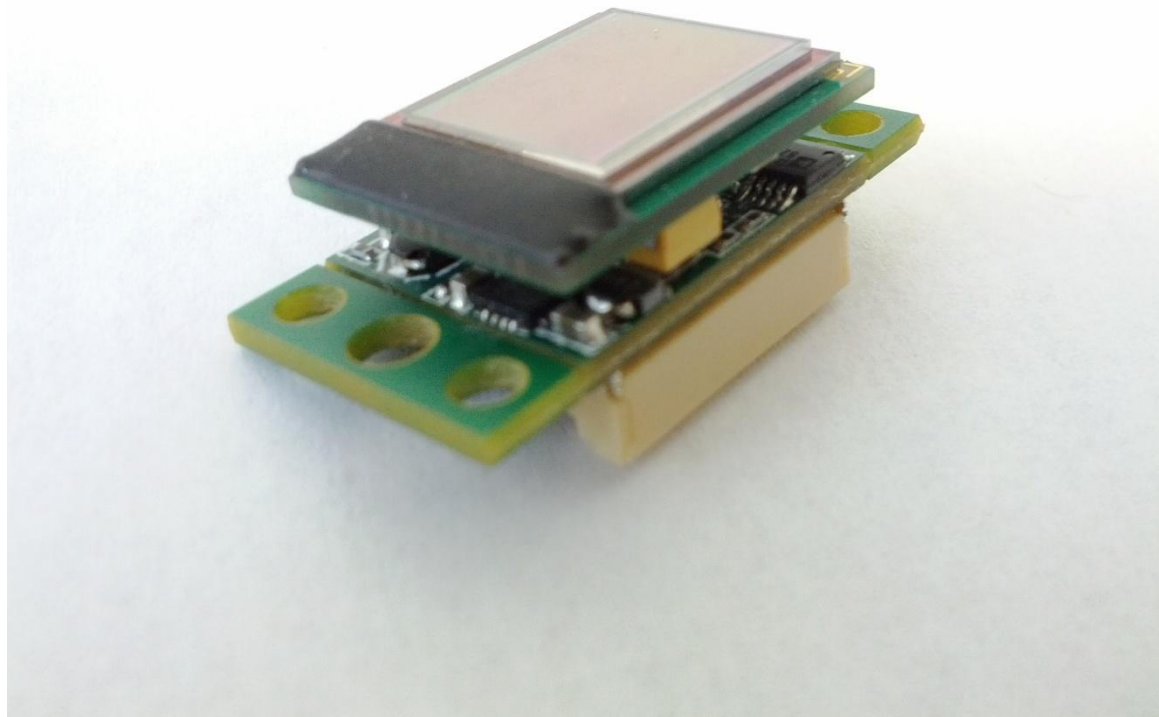
# SVGA-800S with SVGA OLED Connection

MRA Digital, LLC  
[www.mradigital.com](http://www.mradigital.com)  
[info@mradigital.com](mailto:info@mradigital.com)  
443-224-8955  
SVGA-800S Driver Board  
Cable Connection Guide

## SVGA-800S with SVGA OLED Connection Guide

### **SVGA OLED Connection**

1. The OLED connector is NOT keyed and thus it should be connected to the Driver board as shown in the photo.



# SVGA-800S with SVGA OLED Connection Guide

## VGA and USB Cable Connections

- 1. The SVGA-800S Driver can be powered using +5.0v DC
- 2. The 14pin JST end of the cable should be connected to corresponding SVGA-800S port.
- 3. Connect “POWER” USB end of the cable to USB PC connector.
- 4. The USB cable, marked as “CONFIG” can be used with the e-Magin configuration software. (Attention: It does not provide power to Driver and should be used along with Power cable).



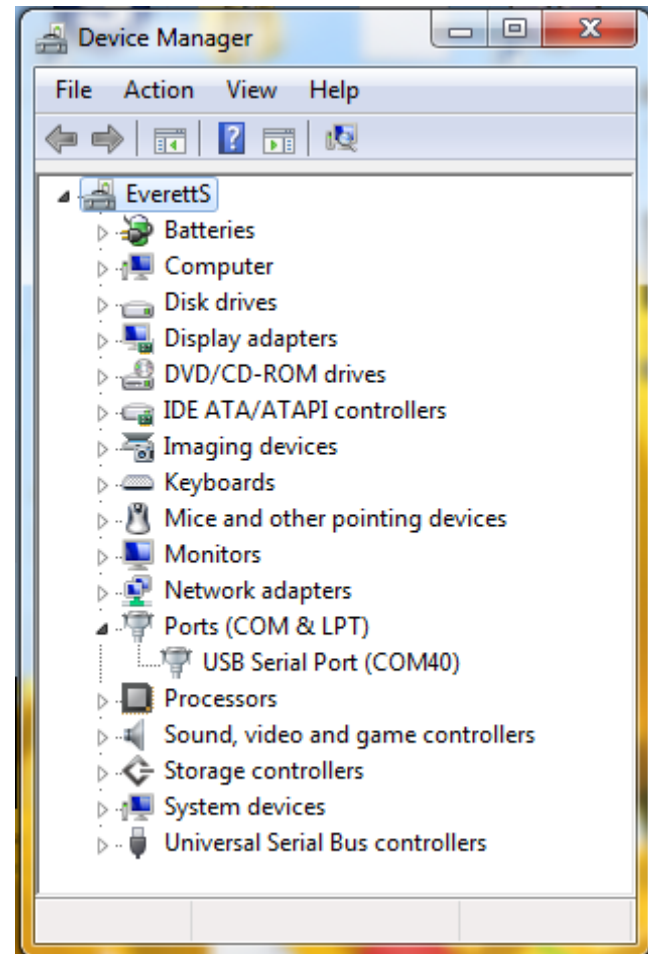
# SVGA-800S with SVGA OLED Connection Guide

1. Be sure download and install the USB driver for the configuration cable from our website.
2. Once the USB driver is installed, a virtual COM port will be installed on your PC. This configuration software uses the virtual COM port to communicate with the SVGA Driver board.
3. To find the virtual COM port number go to the Device Manager window and then expand the Port(COM &LPT) option. In the photo shown the virtual COM port number is 4. The COM port number will stay the same as long as you are using the same configuration cable.
4. The Virtual COM port number MUST be used when starting up the configuration software or upgrading the firmware within the Driver Board.

## Working With the USB Config Cable

Click Here to Download USB Driver:

MRA Digital- [www.mradigital.com](http://www.mradigital.com)



# SVGA-800S with SVGA OLED Connection Guide

- **Power Up Sequence**

- 1. There is no particular power up sequence, but a few examples are as follows:

- **Ex1. With PC on**

- a. Connect VGA cable to Video Source and to the Driver board
- b. The PC may make a noise which indicates that a new monitor has been connected
- c. This can be verified by going to the monitor properties window
- b. If needed connector USB cable to PC and to the Driver Board
- c. Turn on Power to the Driver Board
- d. An image will be displayed on the OLED

- **Ex2. With PC off**

- a. Connect VGA cable to Video Source and to the Driver board
- b. If needed connector USB cable to PC and to the Driver Board
- c. Turn on Power to the Driver Board
- d. Turn on Power to the PC
- e. The LED on the driver board will flash rapidly until a valid video signal is received.
- f. Log into your PC
- g. An image will be displayed on the OLED

- MRA Digital- [www.mradigital.com](http://www.mradigital.com)